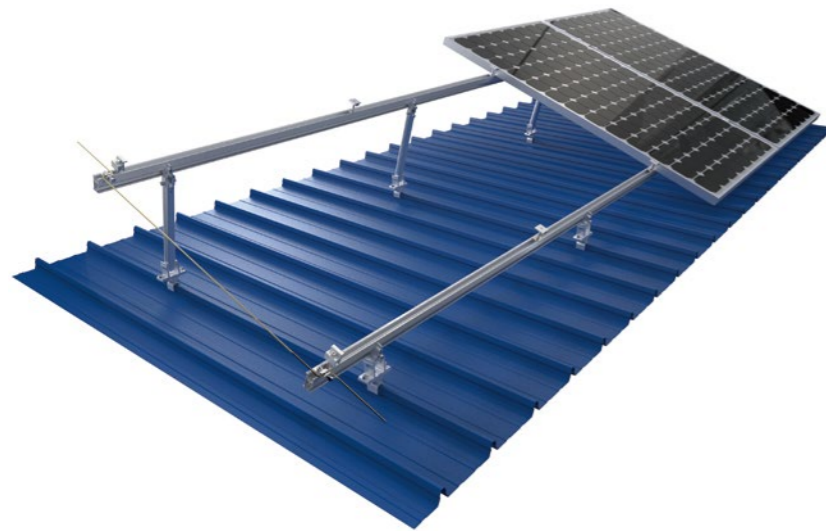


Tilt Mounting



Enerack adjustable tilt system is used for metal roof concrete roof. Fixed or adjustable angles as 10-15 deg, 15-30 deg and 30-60 degree are for your option to maximize energy production.

All Products pre-assembled before shipment, to make the installation easy and quick. Unique design of inner and outer tube with adjustable joints, makes structure stronger, different from the same type products on the market today, and widely compatible with standing seam clamp.

Technical features:

Product name	Adjustable tilt mounting system
Application	Flat concrete roof, metal roof
Inclination	10-15°, 15-30°, 30-60° or customized
Material	AL 6005-T5, SUS 304, EPDM
Finish	AL 6005-T5 Anodized
Module orientation	Landscape or Portrait

1 Assembly

Item No. | ERK-AFL
Description | Adjustable Front Leg



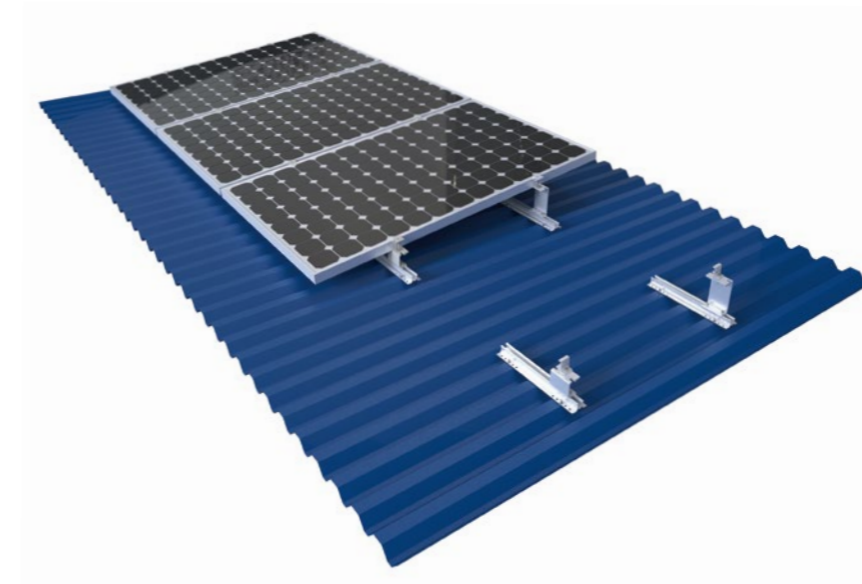
Item No. | ERK-FEC
Description | General End Clamp Kit



Item No. | ERK-EIC
Description | Universal Adjustable (30-40mm) Inner Clamp Kit (Include Spring & Earthing Clip)



Item No. | ERK-ARL-1015
ERK-ARL-1530
ERK-ARL-1530
Description | 10-15° Adjustable Rear Leg
15-30° Adjustable Rear Leg
30-60° Adjustable Rear Leg



Mini Rail with 5 degree support base, lift up the height of the solar panel to achieve cooling conditions, thus maximizing power generation. Simple design, easy to install, with good price.

Technical features:

Product name	Mini Rail 5° Support mounting system
Application	Metal roof
Inclination	5°
Material	AL 6005-T5, SUS 304
Finish	AL 6005-T5 Anodized
Module orientation	Portrait

1 Assembly

Item No. | ERK-FEC-BS
Description | General End Clamp Kit



Item No. | ERK-AIC-BS
Description | Universal Adjustable (30-40mm) Inner Clamp Kit



Item No. | ERK-TRB-D10
Description | 26mm Mini Rail for Corrugated or Trapezoidal Sheet Metal



Item No. | ERK-MRS-5
Description | Mini Rail 5° Support Rear Leg



Item No. | ERK-MFS-5
Description | Mini Rail 5° Support Front Leg

