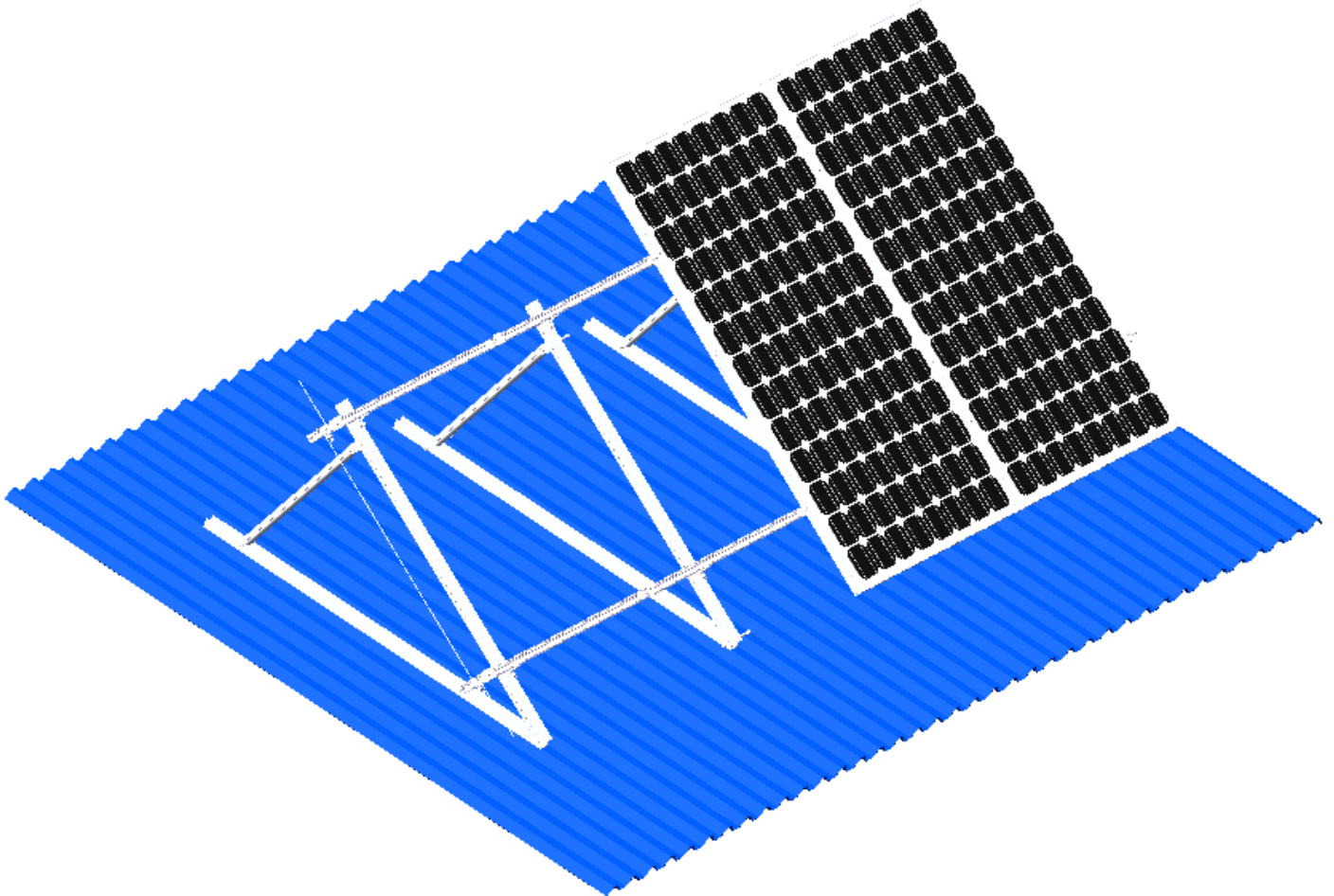
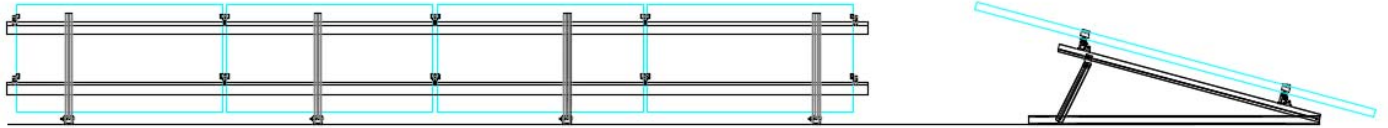


Tripod System Installation Manual



1.1 Engineer Drawing



1.2 Installation tool

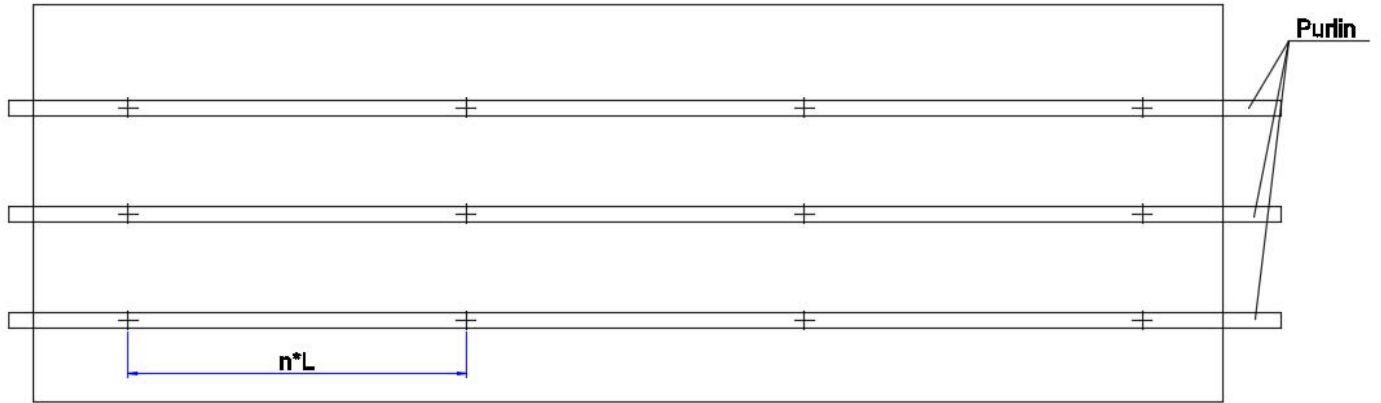


2

Install Step:

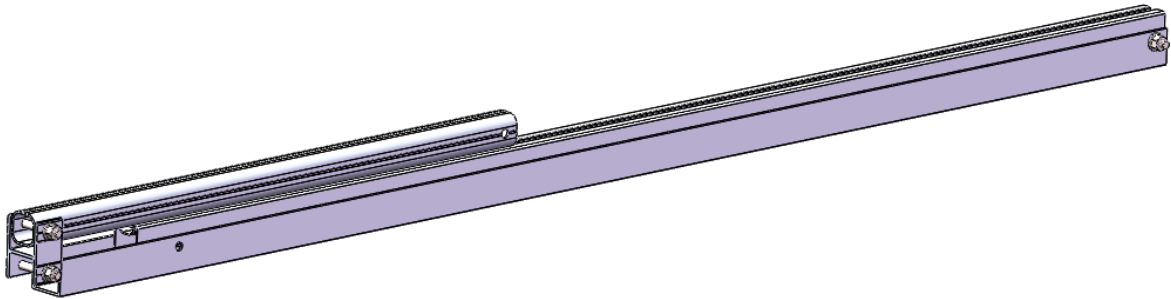
2.1 Positioning foundation

According to the drawing, confirm the roof purlin position and mark the Self-tapping screw .



2.2 Install

The tripod has been folded into a rectangular shape before shipment.

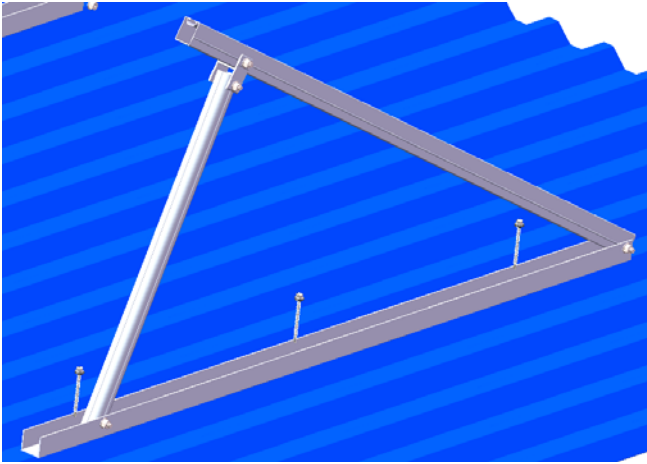


Unfold the Tripod , adjust the position of the parts as shown in the figure below, and lock all connectors:

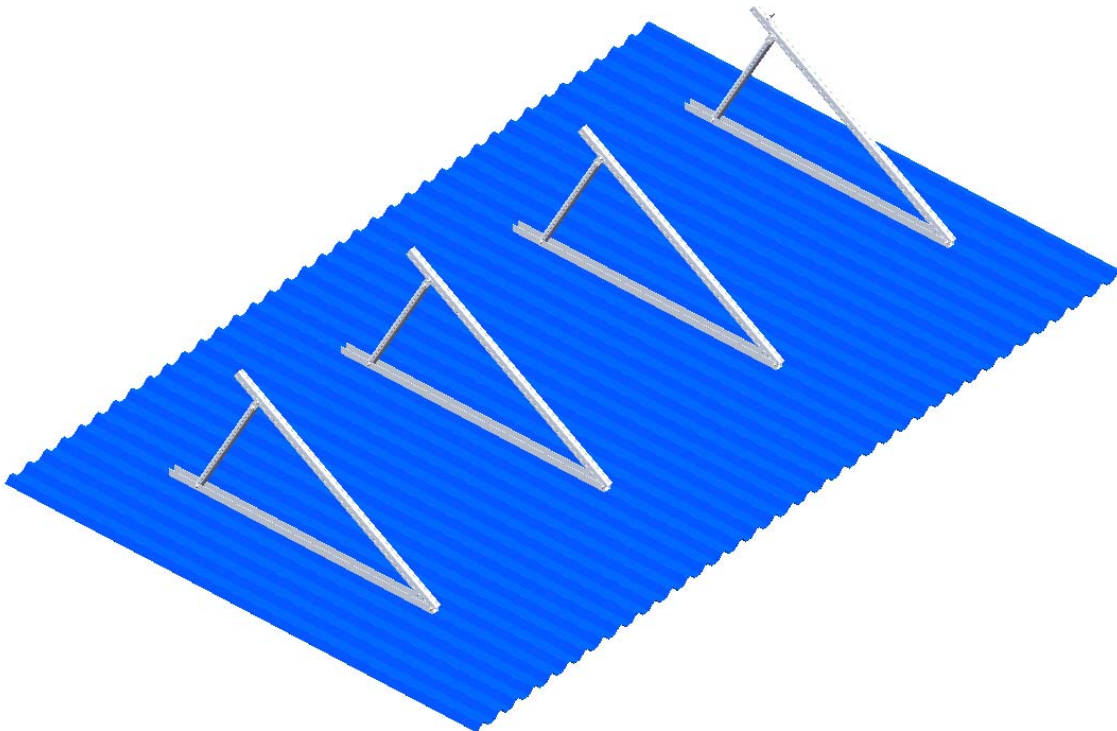


2.3 Connect Tripod with the Screw:

Lock the tripod to the roof with a self-tapping screw:

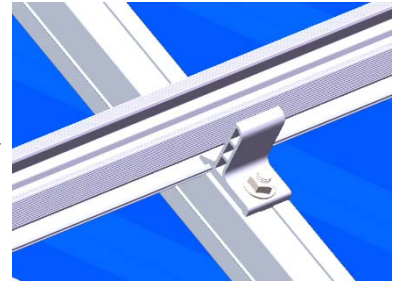
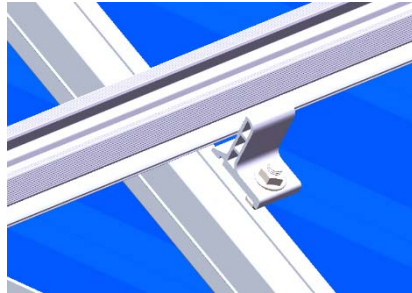
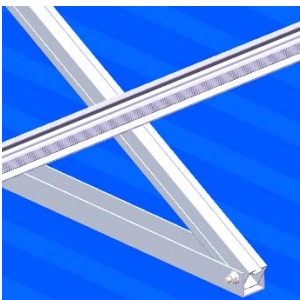


2.4 Tripod installation should be as shown in the figure:

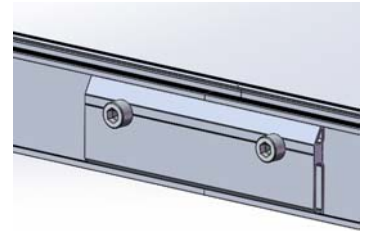
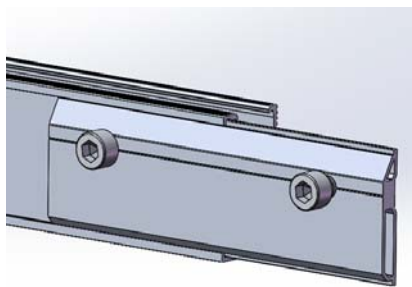
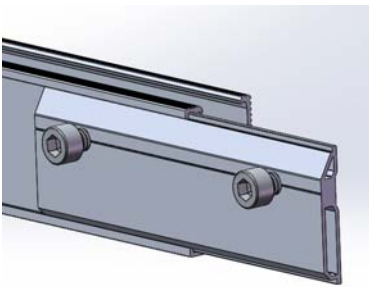


2.5 Install Rail

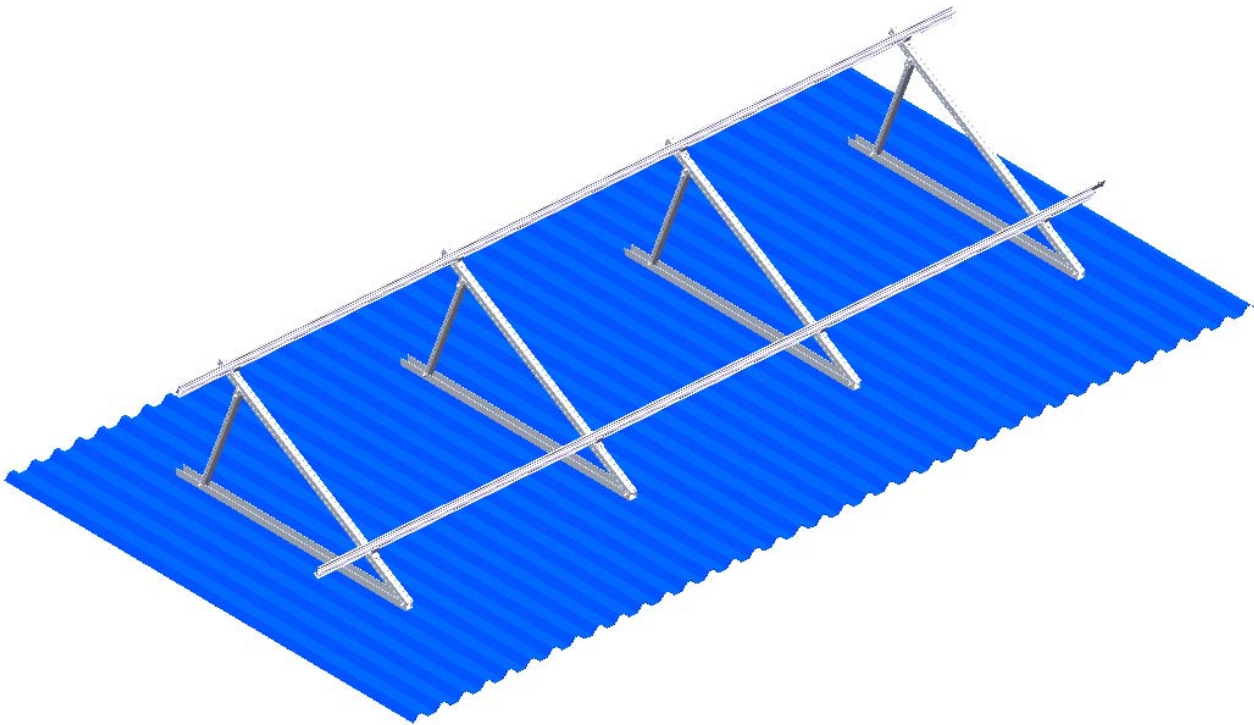
Install Rail on Main Beam ,fixed with Rail clamp as shown in the figure:



Use Rail connect when it need,as shown in the figure :

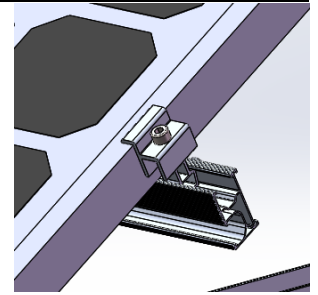
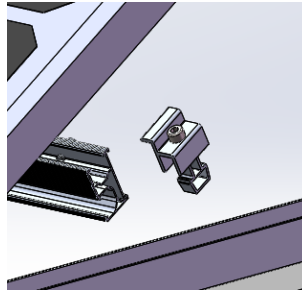
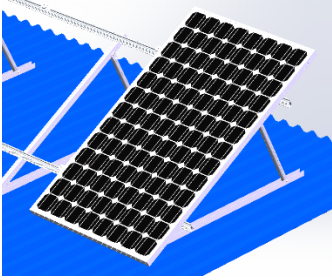


Finished installation as shown in the figure:

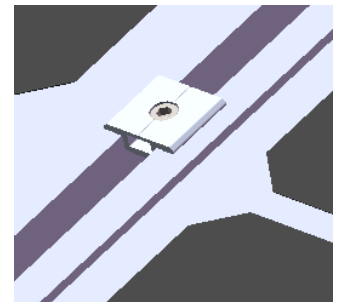
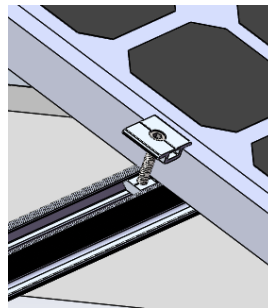
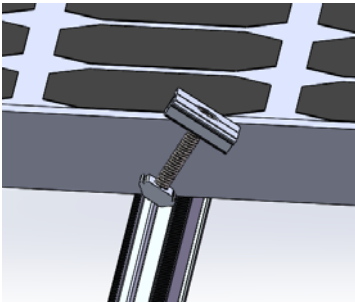


2.6 Install Panels

2.6.1 install panels and End clamp



2.6.2 Install panels and Mid clamp



Finished install panels as shown in the figure:

